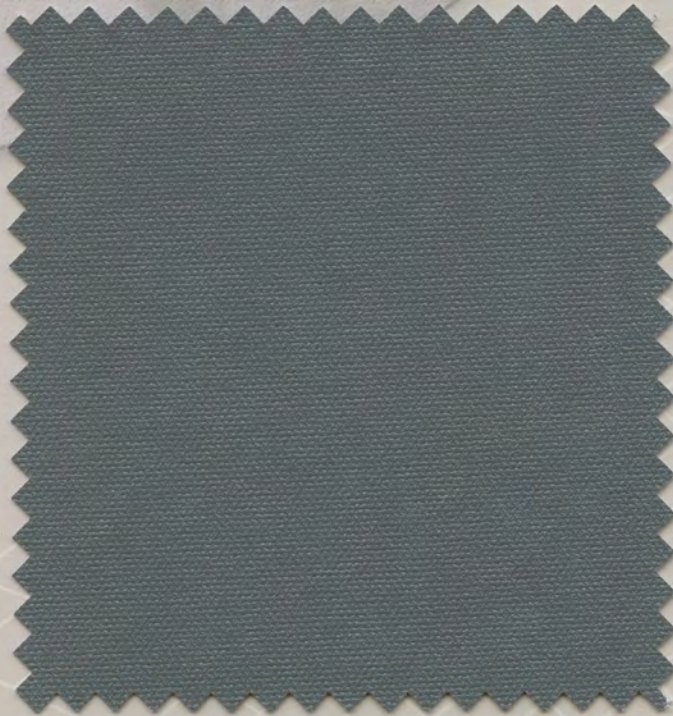


# TOP GUN<sup>®</sup> 1S

*One Sided Acrylic Coated Polyester*



4058 Charcoal



4063 Caribbean Blue



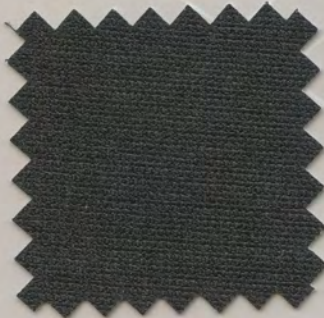
4079 Forest Green



4067 Sea Gull Gray



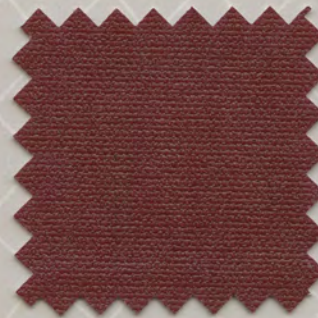
4073 Harbor Blue



4071 Onyx Black



4065 Hemp Beige



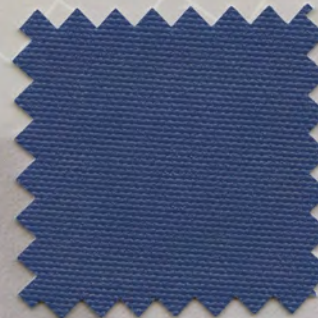
4076 Burgundy\*



4077 Sunset Red\*



4059 Taupe



4064 Royal Blue\*



## Marlen Textiles

\* Premium Color, subject to change

# TOP GUN<sup>®</sup> 1S

Top Gun 1S is an acrylic coated, 100% woven polyester fabric utilizing a proprietary formula and process to coat only the top, virtually eliminating the potential for rub off. As part of the Top Gun family of premium coated fabrics, it is characterized by excellent strength, durability, tear and abrasion resistance, dimensional stability, UV and mildew resistance. Because of its construction, Top Gun 1S has the best dimensional stability of similar fabrics on the market, allowing you to not have to worry about stretch or sag. Also, its unique coating formula will not crack or delaminate with exposure to the elements. Top Gun 1S can be used for many outdoor applications such as marine tops, trailer covers, bimini tops, gazebos, canopies, tarps, playground equipment covers, BBQ grill covers, patio furniture covers and many other useful applications.

*Top Gun 1S, one sided color with double protection.*

## TECHNICAL DATA

Characteristic	TOP NOTCH <sup>®</sup>	TOP NOTCH 9 <sup>®</sup>	TOP NOTCH 1S <sup>®</sup>	TOP GUN <sup>®</sup>	TOP GUN 9 <sup>®</sup>	TOP GUN 1S <sup>®</sup>	ODYSSEY <sup>®</sup>
Width, inches	60	60 & 2 meters*	60	62 & 2 meters*	62	60	64
Roll Size, yards	50	50	50	50	50	50	75
Weight, oz/yard <sup>2</sup>	11.5	9.0	7.5	11.5	9.0	9.0	6.5
Tensile (lb/in), Warp x Fill	500+ x 305	500+ x 300	320 x 255	500+ x 388	360 x 250	480 x 340	297 x 220
Tongue Tear (lb/in), Warp x Fill	46 x 38	30 x 22	29 x 25	40 x 32	30 x 29	38 x 30	22 x 20
Spray Rating	100	100	100	90+	90+	90+	90+
3 Drop Rating (cm)	36	40	82	76	71	76	51
Warranty Period (years)	5	5	3	5	4	5	3
Breathability (g/m <sup>2</sup> /24 hr.)	645	700	260	116	100	180	87
Shrinkage (%), Warp x Fill	0 x 0	0 x 0	<1 x 0	0 x <1	0 x 0	0 x 0	0 x <1
Stretch (%), Warp x Fill	<1 x <1	<1 x <1	<1 x <1.5	<1 x <1	<1 x <1	<1 x <1	<1 x <1

\*Select Colors

**Marlen Textiles**

[www.marlentextiles.com](http://www.marlentextiles.com)

Contact Marlen Textiles for specific details of warranty coverage.  
9201511

THE **miami**<sup>™</sup>  
CORPORATION

[www.miamicorp.com](http://www.miamicorp.com)  
800.543.0448